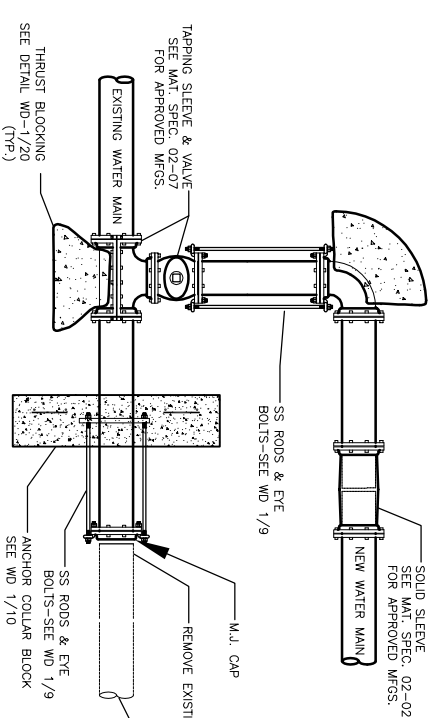


RESERVED

SEE MATERIAL SPECIFICATIONS FOR APPROVED MANUFACTURERS

WD-2
1A



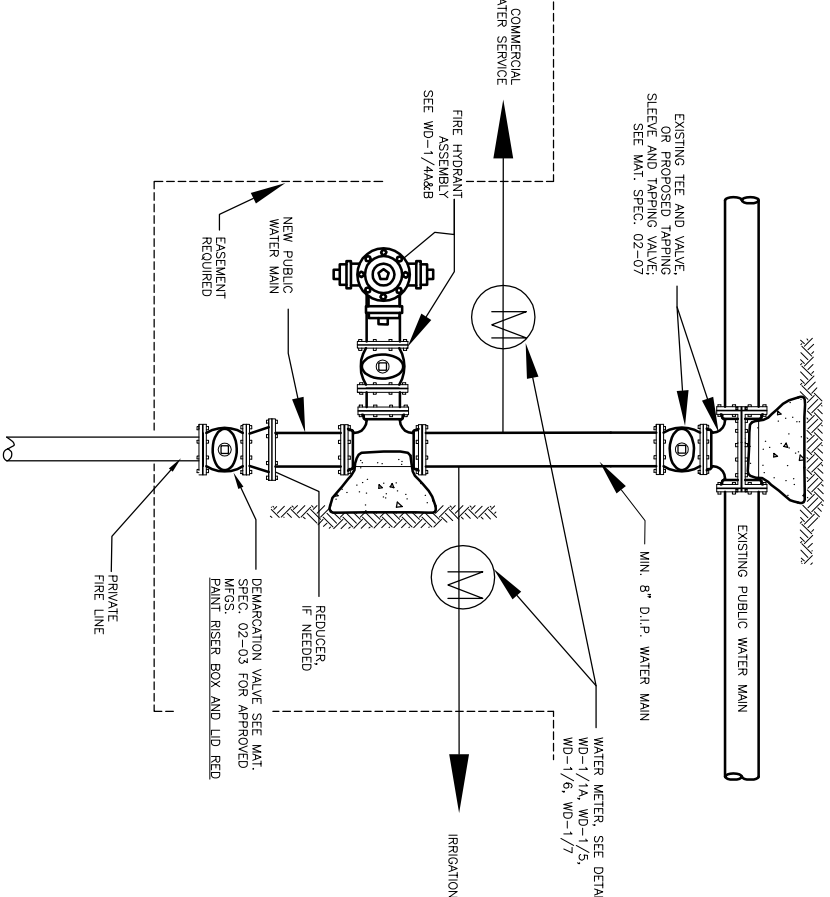
CUT AND CAP DETAIL #1

N.T.S.

WD-2
1

REV. DEC. 2006

SEE MATERIAL SPECIFICATIONS FOR APPROVED MANUFACTURERS



COMMERCIAL IRRIGATION AND FIRE LINE CONNECTION DETAIL

N.T.S.

WD-2
2

REV. DEC. 2006

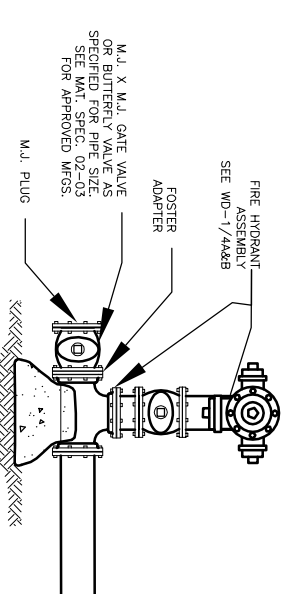
SEE MATERIAL SPECIFICATIONS FOR APPROVED MANUFACTURERS

RESERVED

WD-2
3

REV. MAR. 2009

SEE MATERIAL SPECIFICATIONS FOR APPROVED MANUFACTURERS



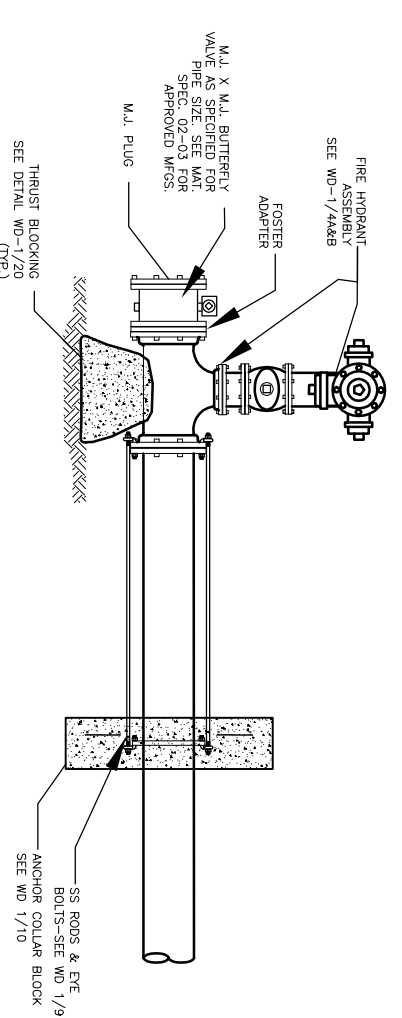
END-OF-LINE/PHASE LINE FIRE HYDRANT DETAIL 8" & 12" MAINS

N.T.S.

WD-2
4

REV. DEC. 2006

SEE MATERIAL SPECIFICATIONS FOR APPROVED MANUFACTURERS



END-OF-LINE/PHASE LINE FIRE HYDRANT DETAIL MAINS LARGER THAN 12"

N.T.S.

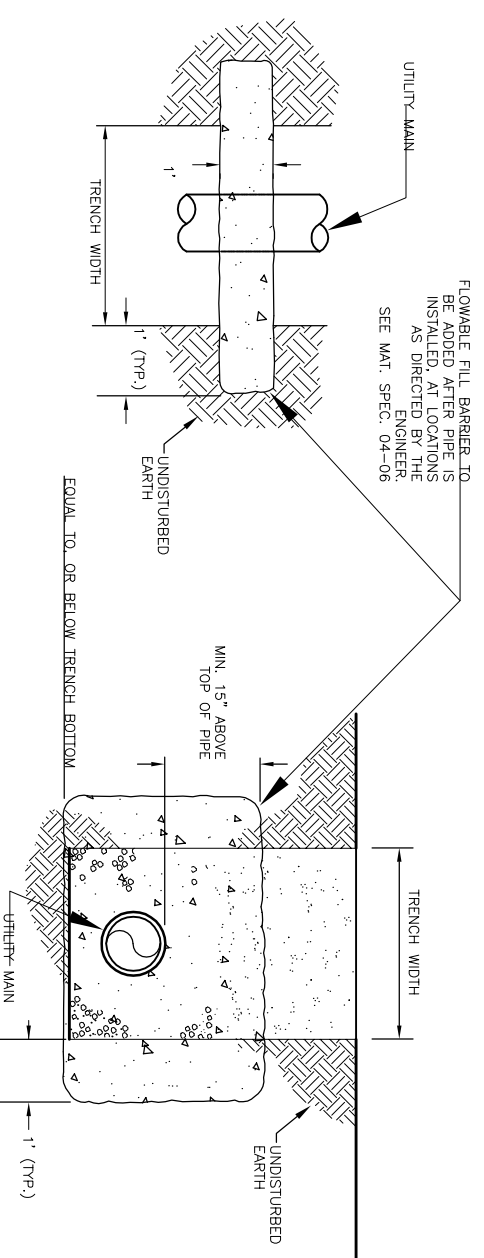
WD-2
5

REV. DEC. 2006

RESERVED

WD-2
6

SEE MATERIAL SPECIFICATIONS FOR APPROVED MANUFACTURERS



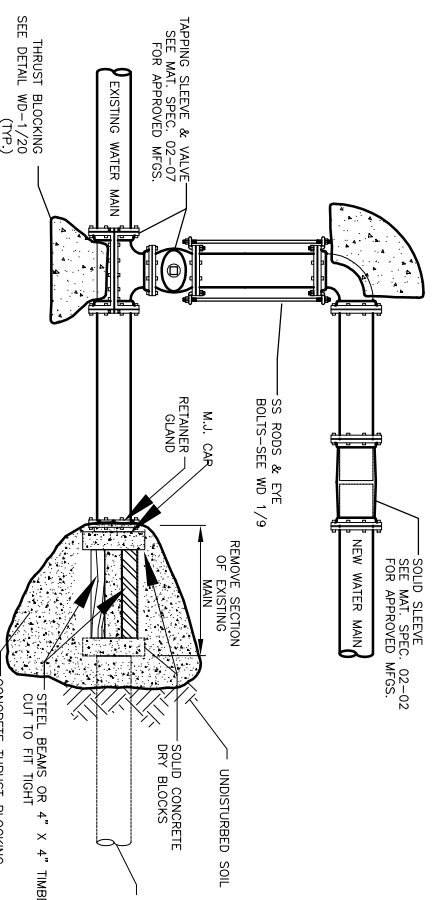
ANTI-SEEPAGE BARRIER COLUMN

N.T.S.

WD-2
12

REV. DEC. 2006

SEE MATERIAL SPECIFICATIONS FOR APPROVED MANUFACTURERS



CUT AND CAP DETAIL #2 "HOT-BLOCK"

N.T.S.

WD-2
7

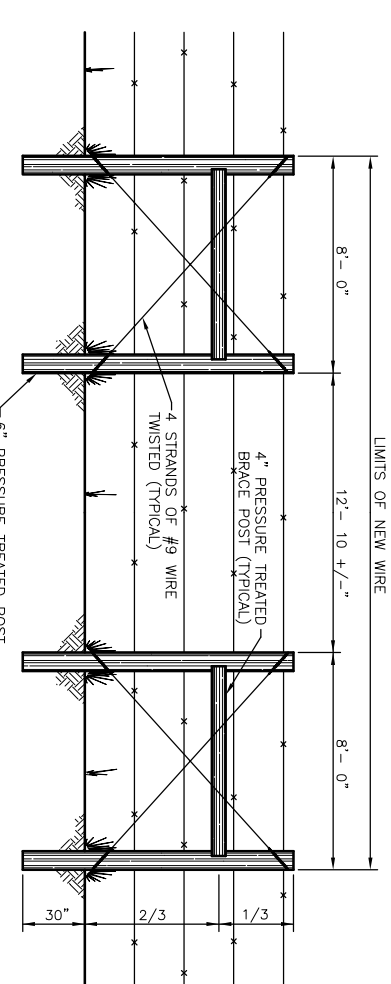
REV. DEC. 2006

SEE MATERIAL SPECIFICATIONS FOR APPROVED MANUFACTURERS

RESERVED

WD-2
8

SEE MATERIAL SPECIFICATIONS FOR APPROVED MANUFACTURERS



BARBED WIRE FENCE CROSSING REPAIR DETAIL

N.T.S.

WD-2
14

REV. MAR. 2007

SEE MATERIAL SPECIFICATIONS FOR APPROVED MANUFACTURERS

RESERVED

WD-2
15

SEE MATERIAL SPECIFICATIONS FOR APPROVED MANUFACTURERS

SEE MATERIAL SPECIFICATIONS FOR APPROVED MANUFACTURERS

RESERVED

WD-2
16

SEE MATERIAL SPECIFICATIONS FOR APPROVED MANUFACTURERS

SEE MATERIAL SPECIFICATIONS FOR APPROVED MANUFACTURERS

RESERVED

WD-2
17

SEE MATERIAL SPECIFICATIONS FOR APPROVED MANUFACTURERS

SEE MATERIAL SPECIFICATIONS FOR APPROVED MANUFACTURERS

RESERVED

WD-2
18

SEE MATERIAL SPECIFICATIONS FOR APPROVED MANUFACTURERS

METER SIZING AND MAIN CONNECTION DATA

METER SIZE	FLOW RANGE	CONNECTION TO MAIN	EXISTING MAIN	METER BOX APPROX. SIZE	SOURCE
5/8" (SINGLE OR DOUBLE)	1-20 GPM	1" CORP STOP	1" CORP STOP	GREEN AREAS ~22" DIA BASE	SEE STANDARD SPEC. 02-10
1"	3-50 GPM	1" CORP STOP	1" CORP STOP	~18"x24" BASE	SEE STANDARD SPEC. 02-10
1 1/2"	4-120 GPM	SEE WD 1/5	2" TAPPING SADDLE AND VALVE	2-24"x37" METER BOXES	SEE STANDARD SPEC. 02-13
2"	4-180 GPM	SEE WD 1/5	2" TAPPING SADDLE AND VALVE	2-24"x37" METER BOXES	SEE STANDARD SPEC. 02-13
3"	5-350 GPM	SEE WD 1/5	2" TAPPING SADDLE AND VALVE	8 L. x 5.5 W. x 4 D. PRECAST BY PILE CONCRETE, LOWELL, AR	
4"	15-1000 GPM	MAIN x 4" TEE AND VALVE	MAIN x 4" TAPPING SADDLE AND VALVE	6x10"	(CAST-IN-PLACE BOX) BY CONTRACTOR-SEE RWU FOR LID DETAIL
6"	30-2,000 GPM	MAIN x 6" TEE AND VALVE	MAIN x 6" TAPPING SADDLE AND VALVE	6x10"	(CAST-IN-PLACE BOX) BY CONTRACTOR-SEE RWU FOR LID DETAIL
8"	35-3,500 GPM	MAIN x 8" TEE AND VALVE	MAIN x 8" TAPPING SADDLE AND VALVE	6x10"	(CAST-IN-PLACE BOX) BY CONTRACTOR-SEE RWU FOR LID DETAIL

NOTE: CONNECTIONS TO NEW MAINS ARE CONSTRUCTED BY THE CONTRACTOR. CONNECTIONS TO EXISTING MAINS ARE CONSTRUCTED BY RWU ON A COST PLUS BASIS

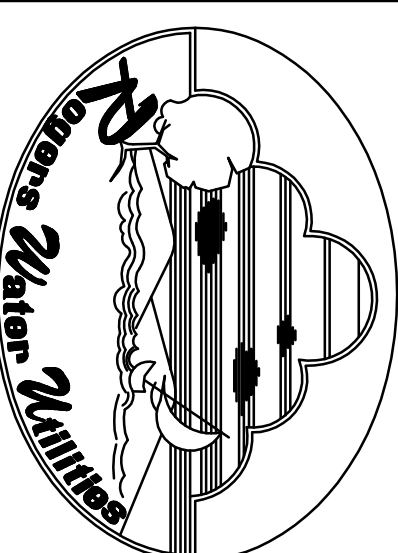
WATER DETAILS

RESERVED

WD-2
23

RESERVED

RESERVED



P.O. BOX 338
OFFICE - 601 SOUTH 2ND
ROGERS, ARKANSAS 72757-0338

DESIGNED BY: DJS
CHECKED BY: SPANGLER WATER DIVISION
DATE: FEB. 14, 08
SHEET NO: WD-2