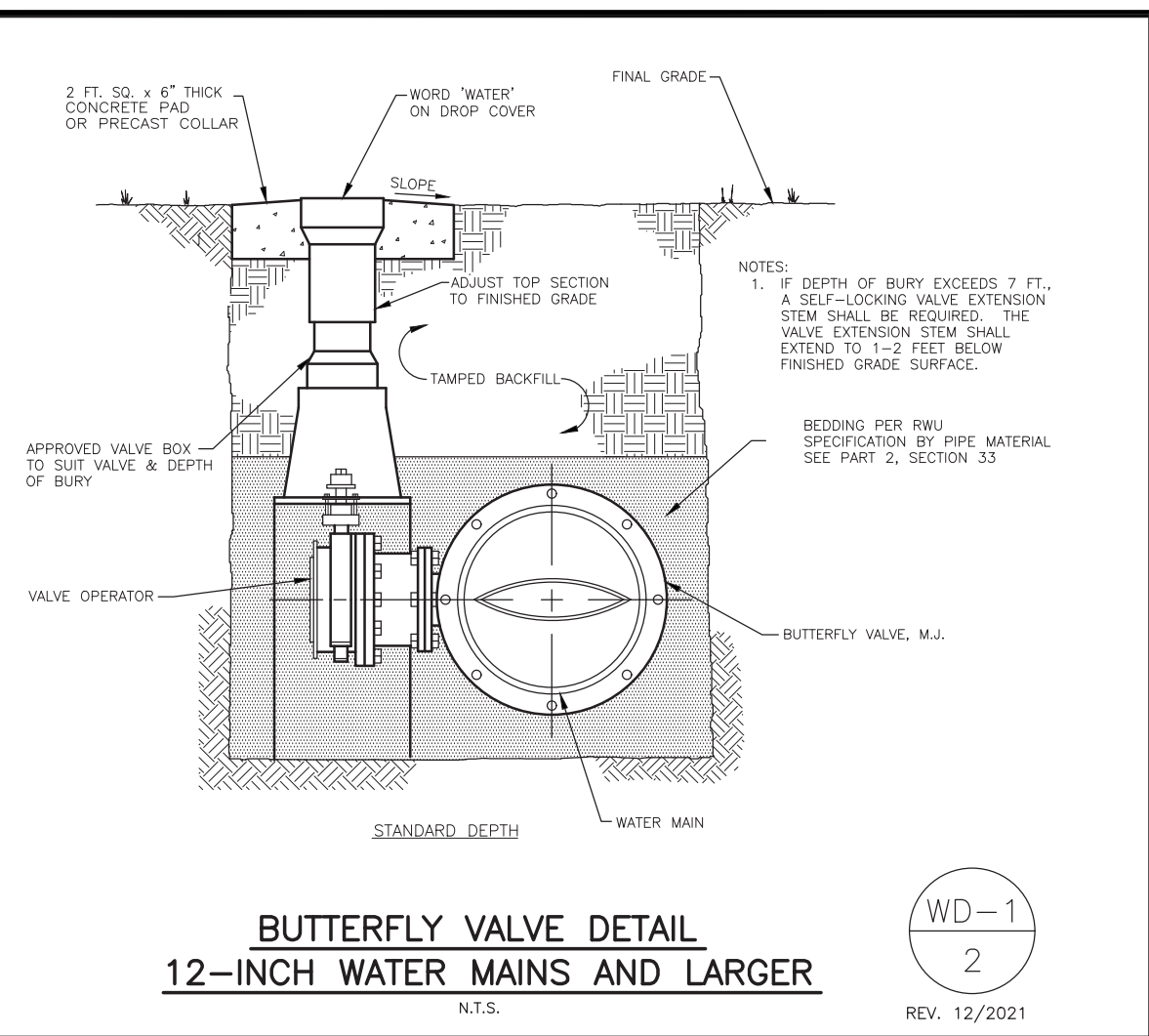


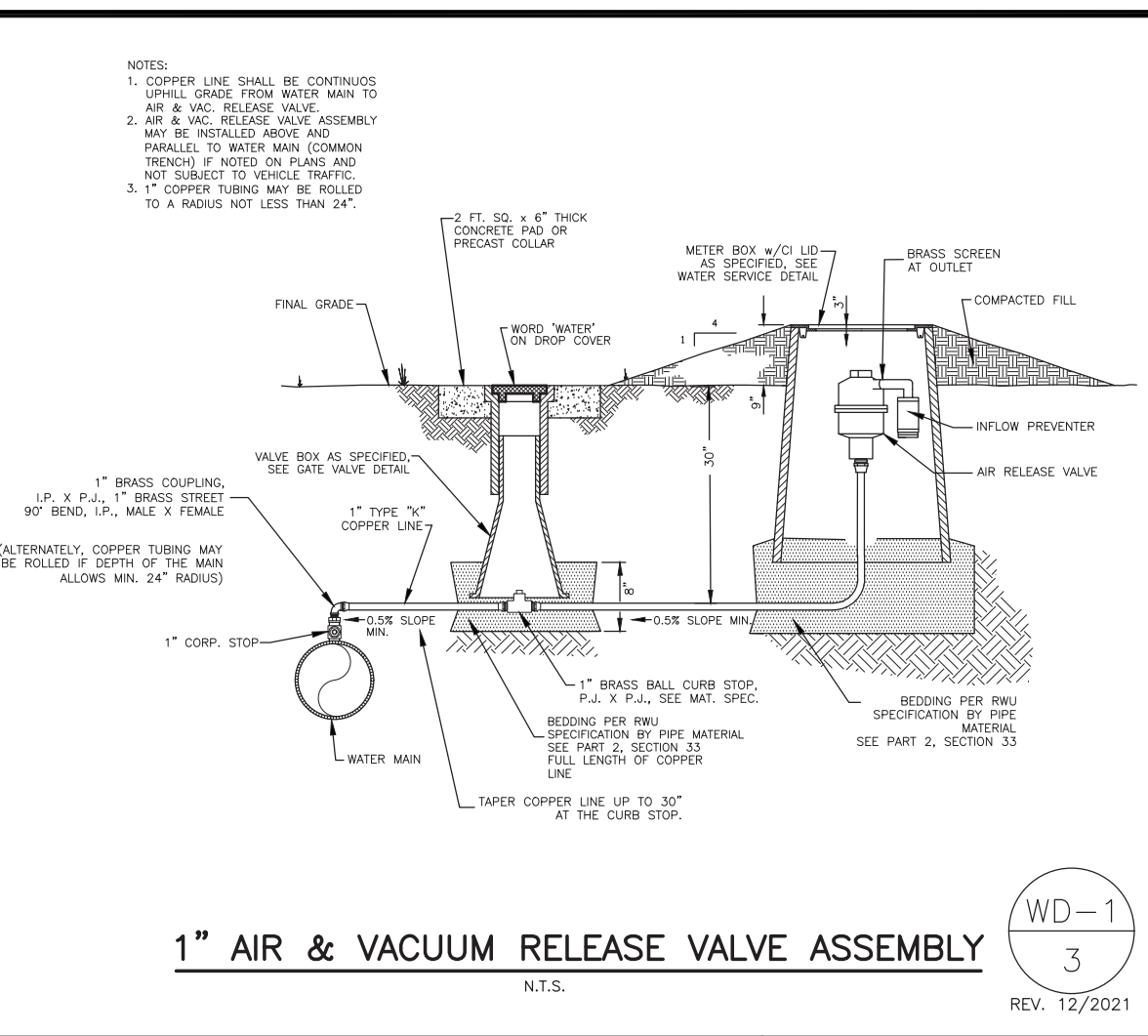
**GATE VALVE DETAIL**

WD-1  
1  
REV. 12/2021



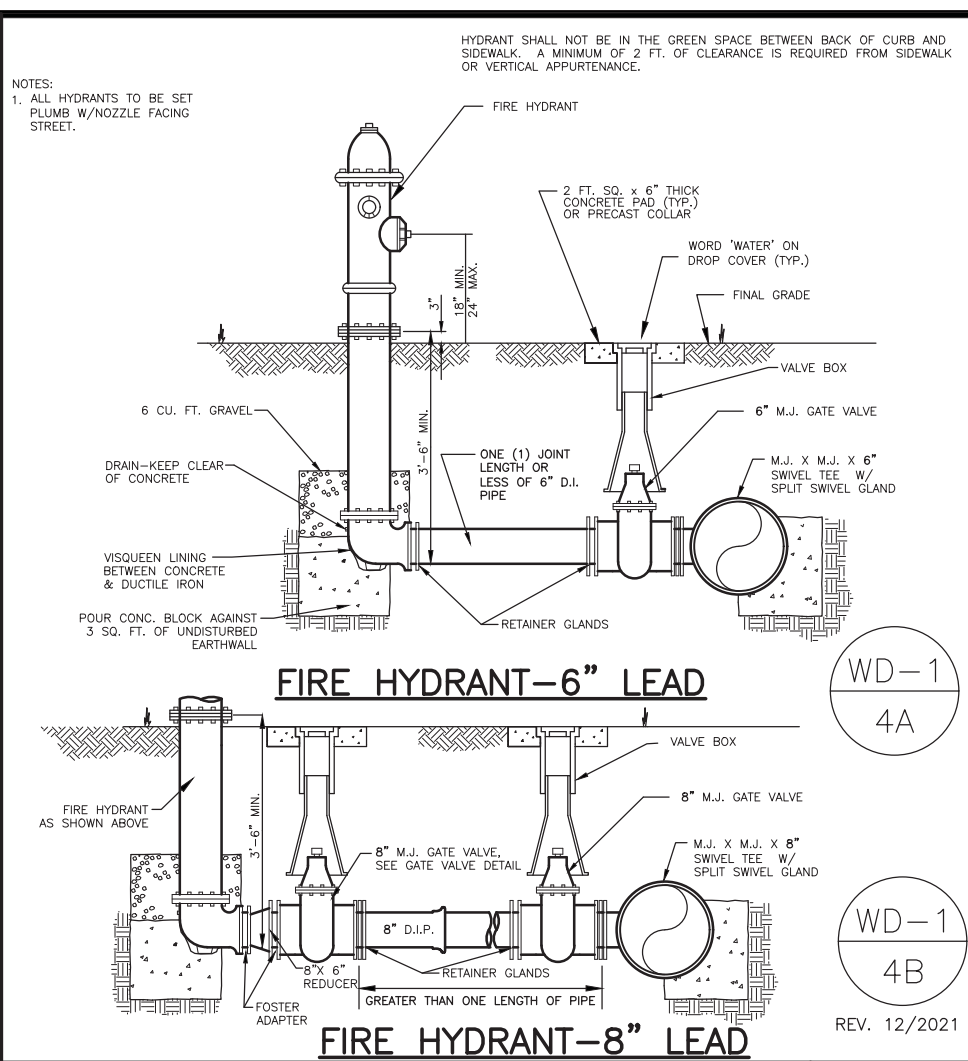
**BUTTERFLY VALVE DETAIL  
12-INCH WATER MAINS AND LARGER**

WD-1  
2  
REV. 12/2021



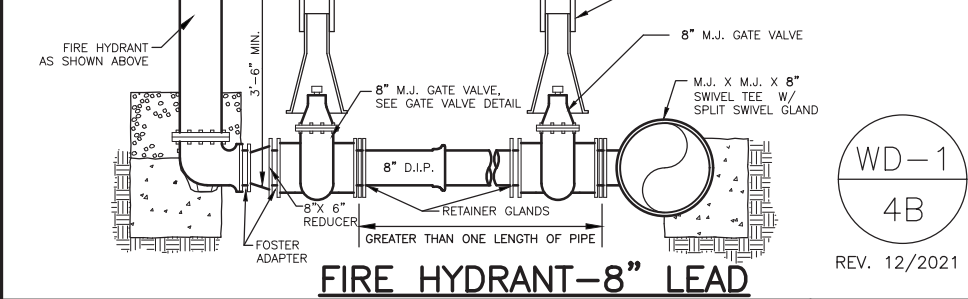
**1\"/>**

WD-1  
3  
REV. 12/2021



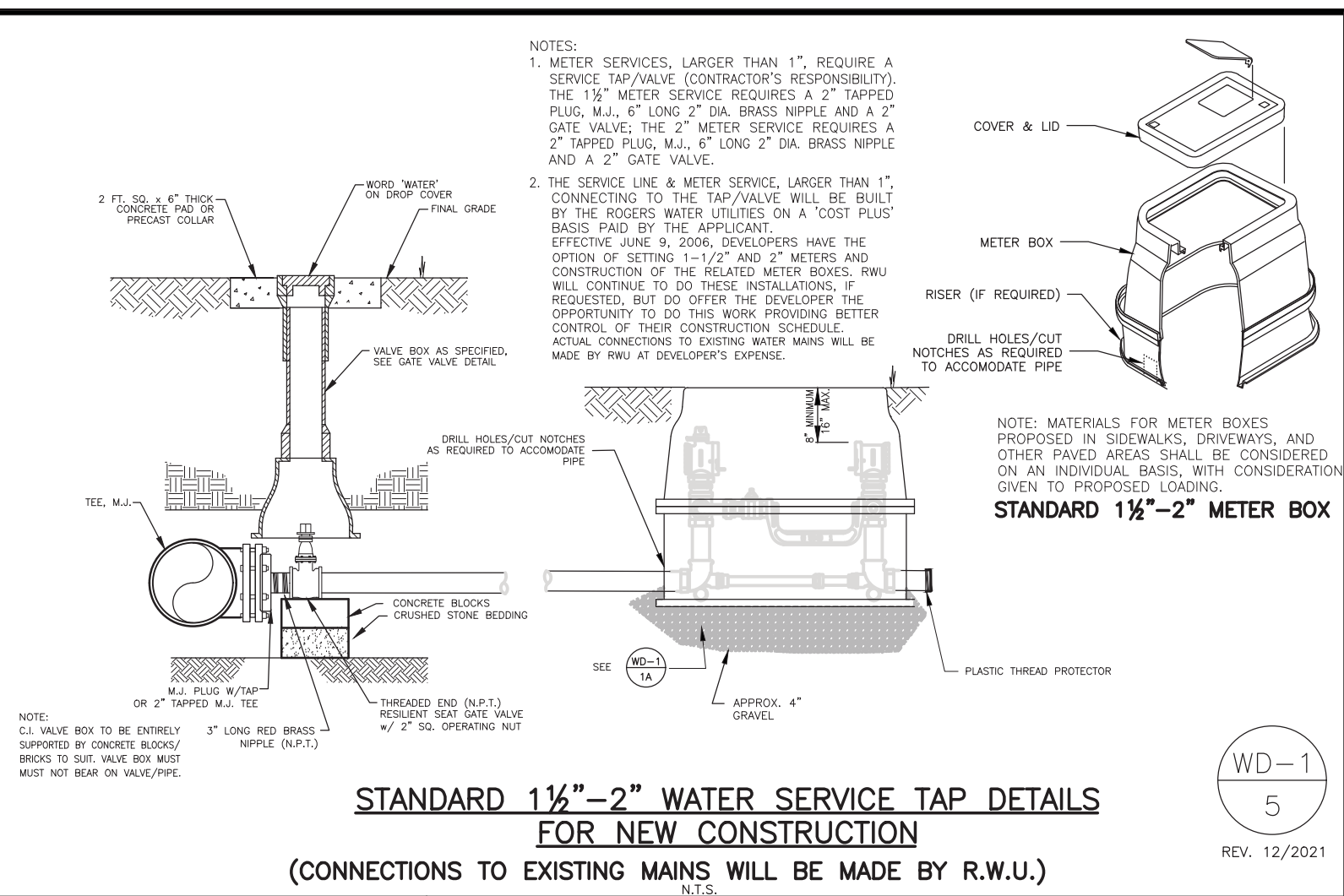
**FIRE HYDRANT-6\"/>**

WD-1  
4A  
REV. 12/2021



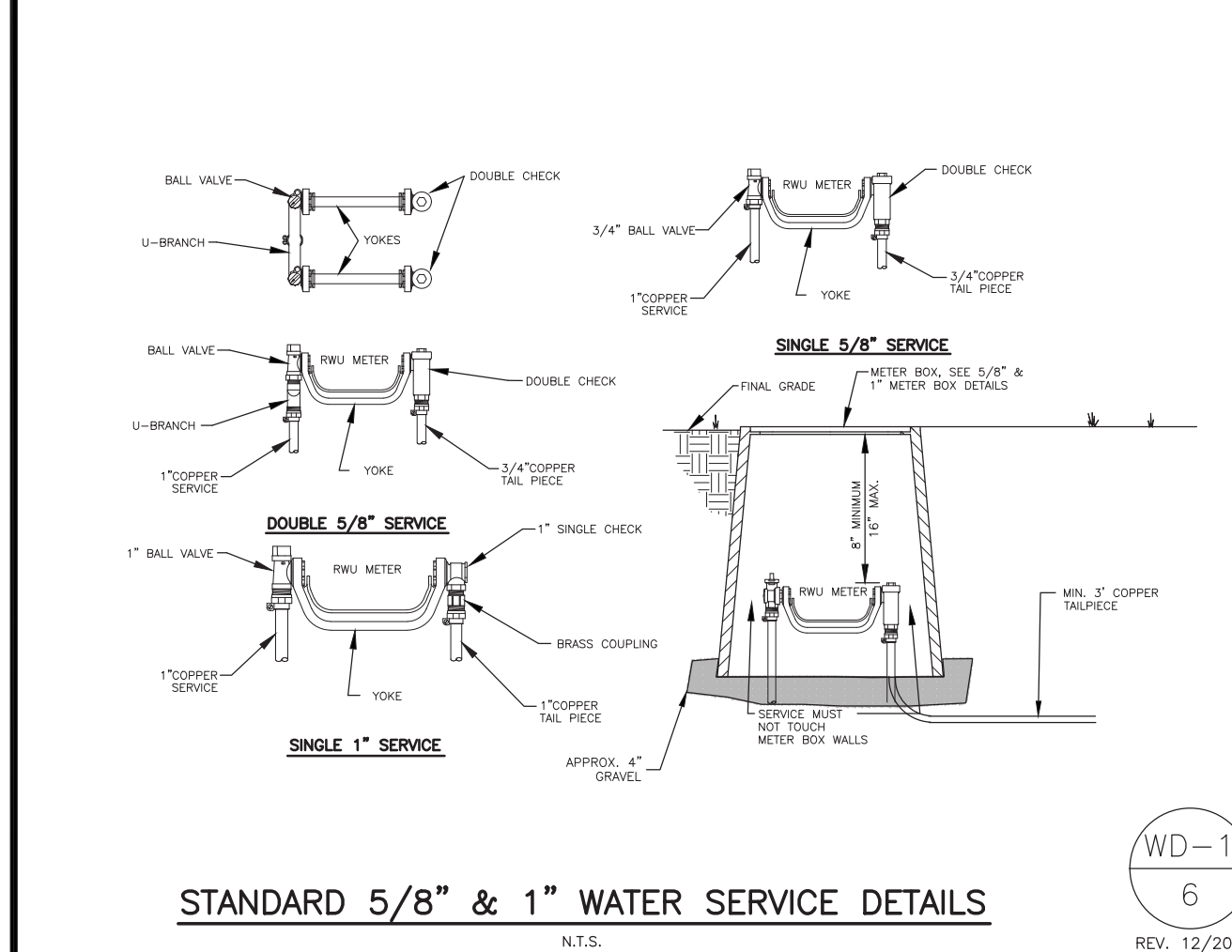
**FIRE HYDRANT-8\"/>**

WD-1  
4B  
REV. 12/2021



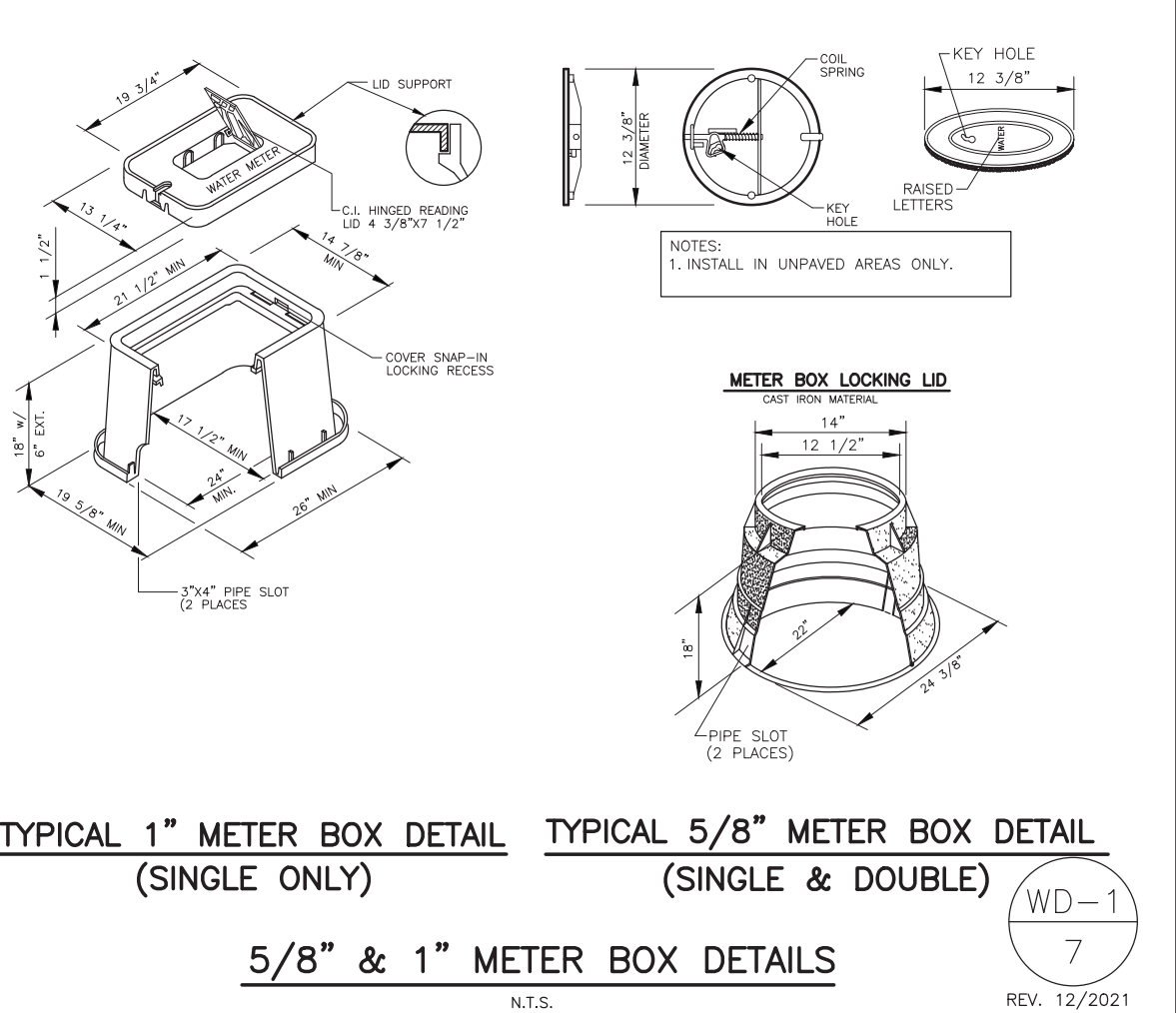
**STANDARD 1 1/2\"/>**

WD-1  
5  
REV. 12/2021



**STANDARD 5/8\"/>**

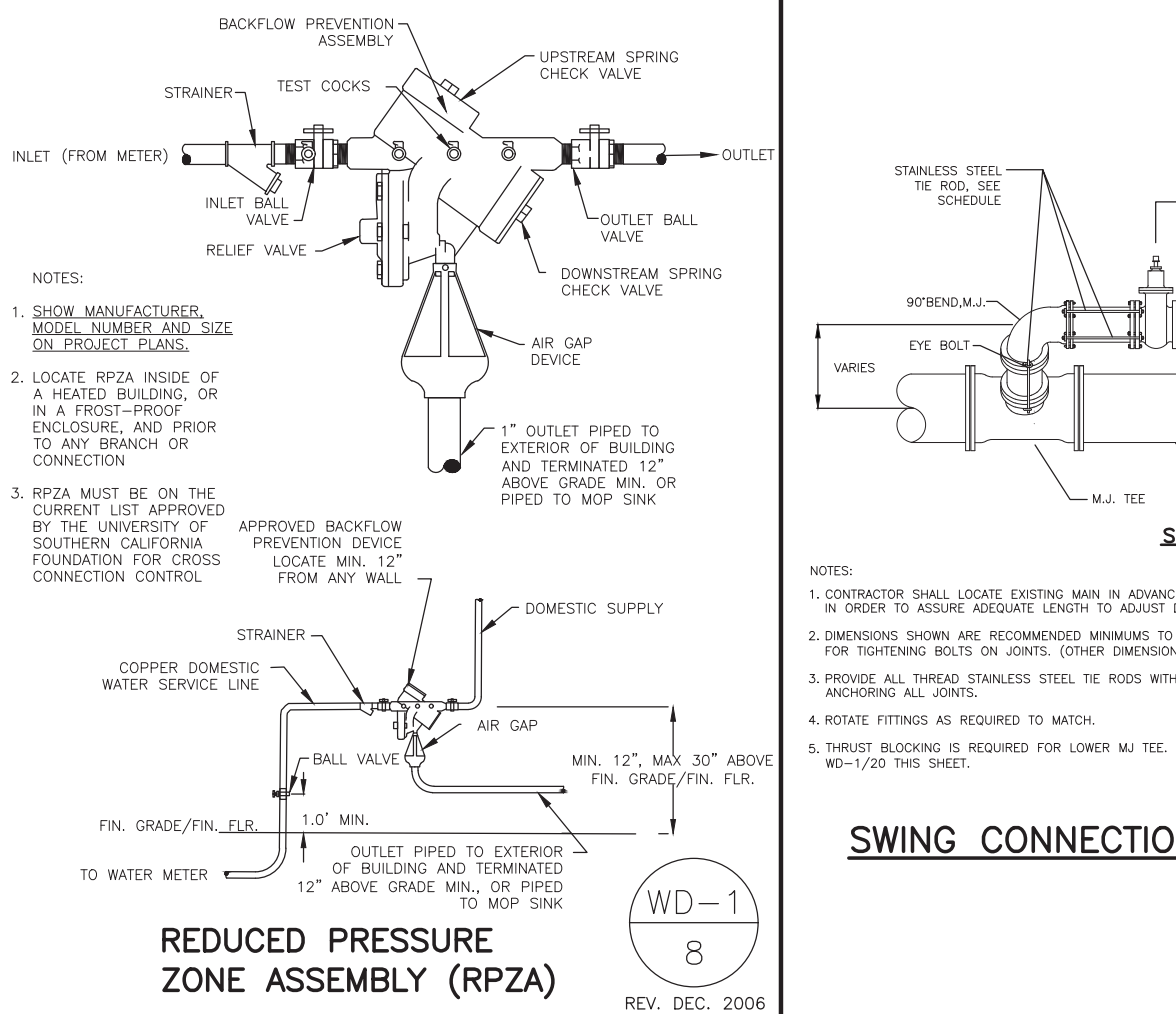
WD-1  
6  
REV. 12/2021



**TYPICAL 1\"/>**

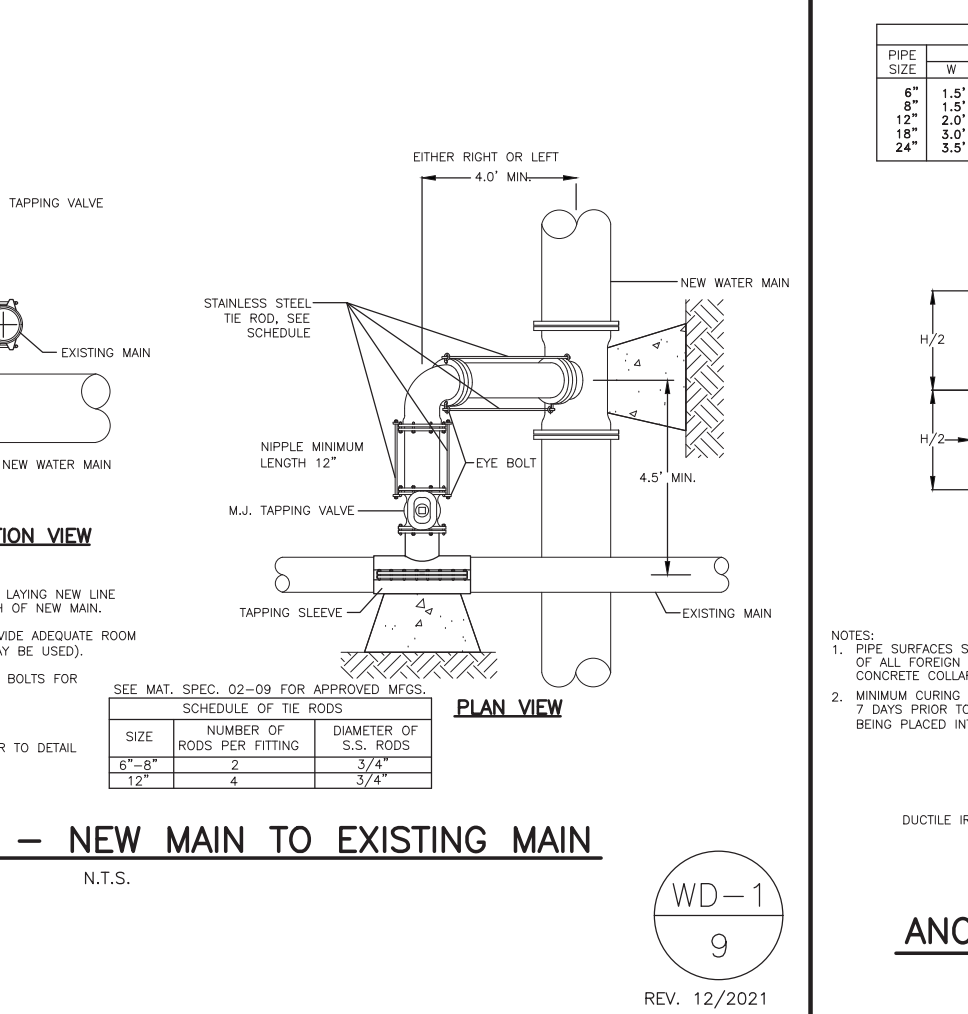
**TYPICAL 5/8\"/>**

WD-1  
7  
REV. 12/2021



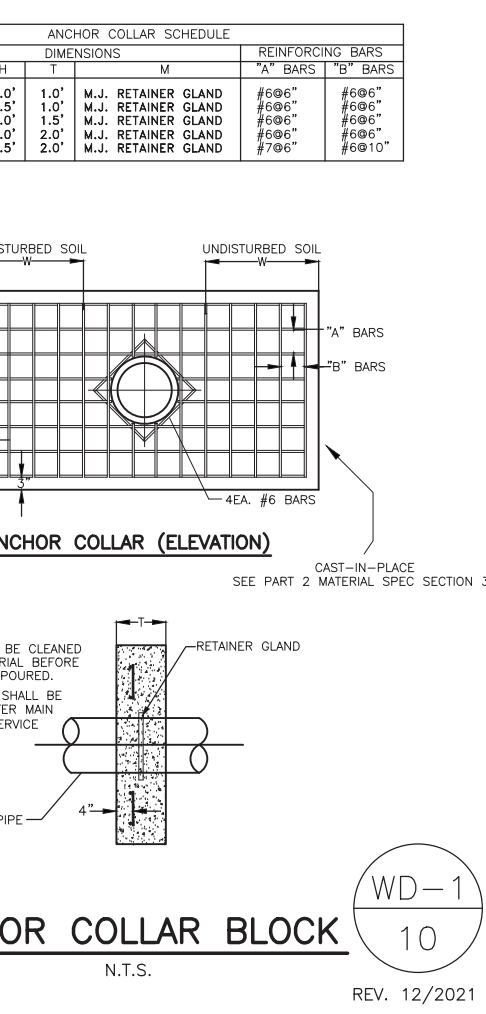
**REDUCED PRESSURE ZONE ASSEMBLY (RPZA)**

WD-1  
8  
REV. DEC. 2006



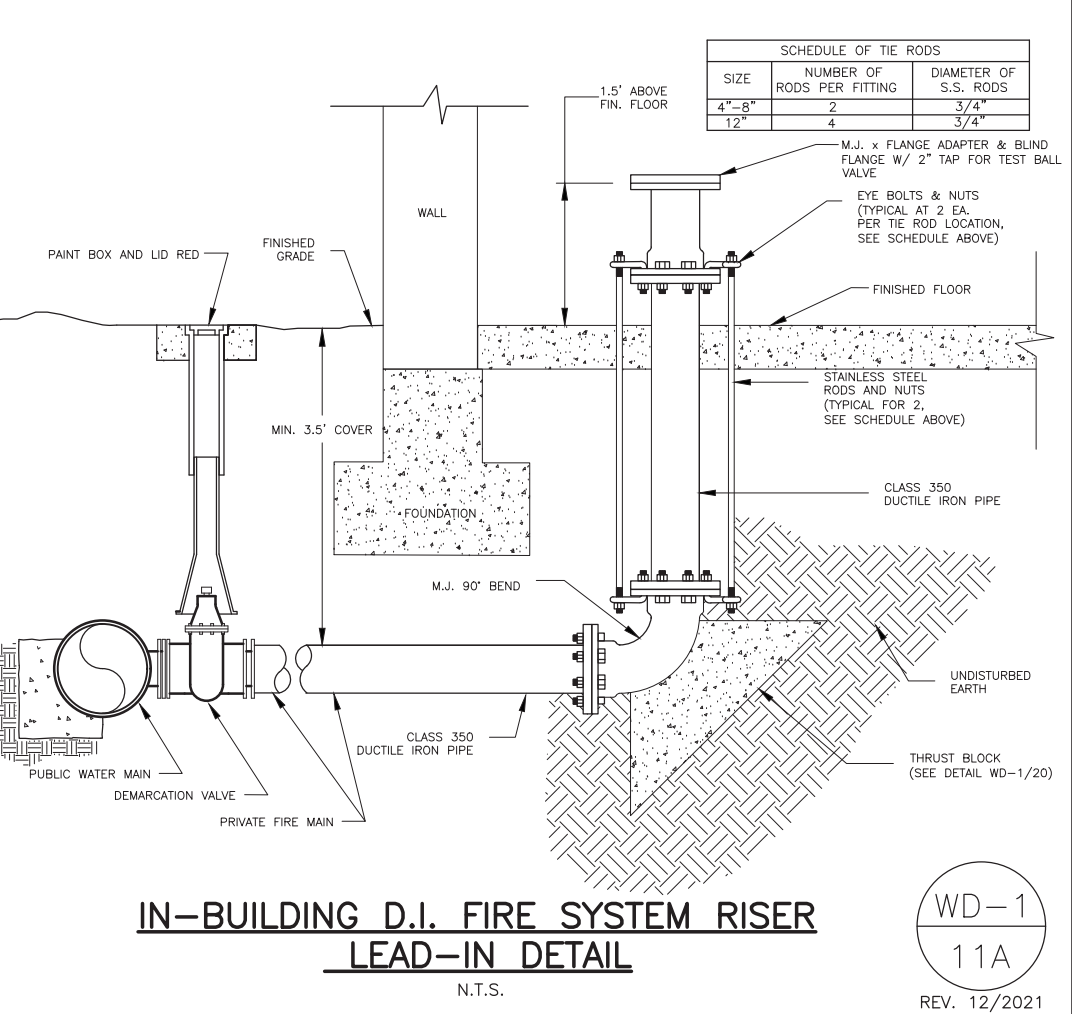
**SWING CONNECTION - NEW MAIN TO EXISTING MAIN**

WD-1  
9  
REV. 12/2021



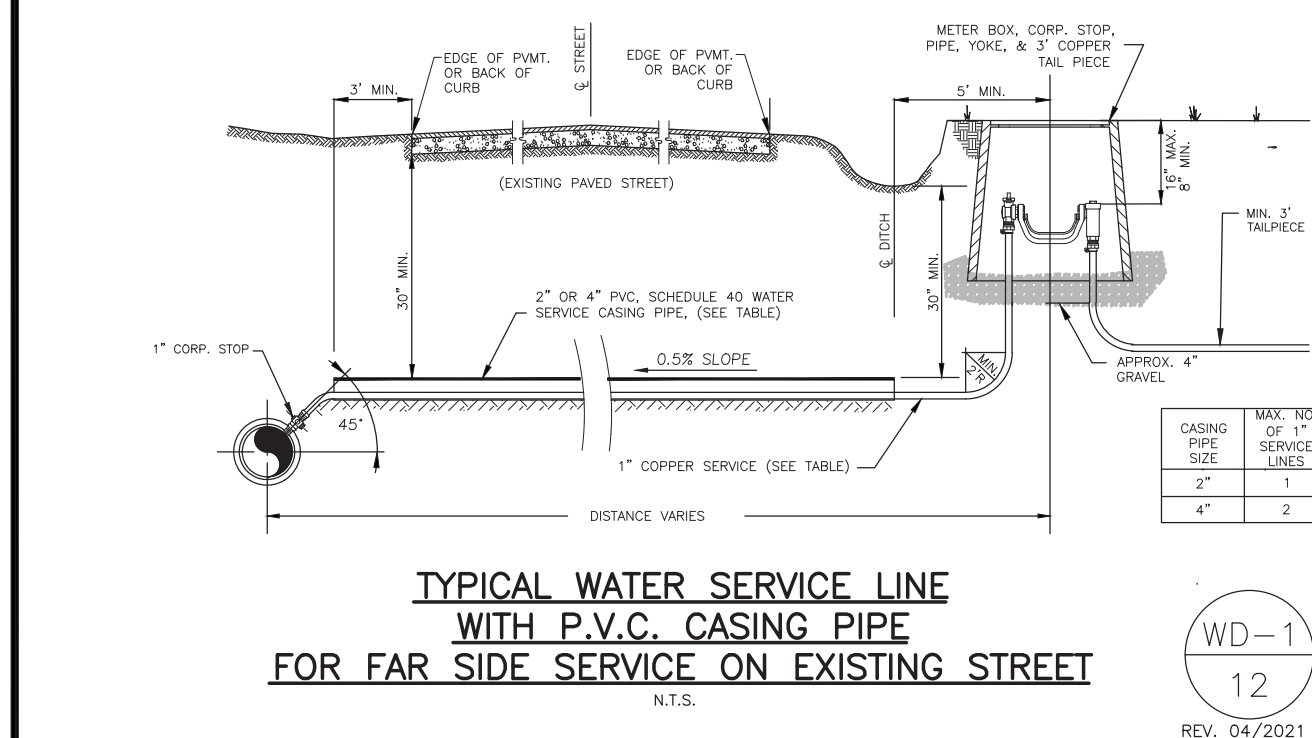
**ANCHOR COLLAR BLOCK**

WD-1  
10  
REV. 12/2021



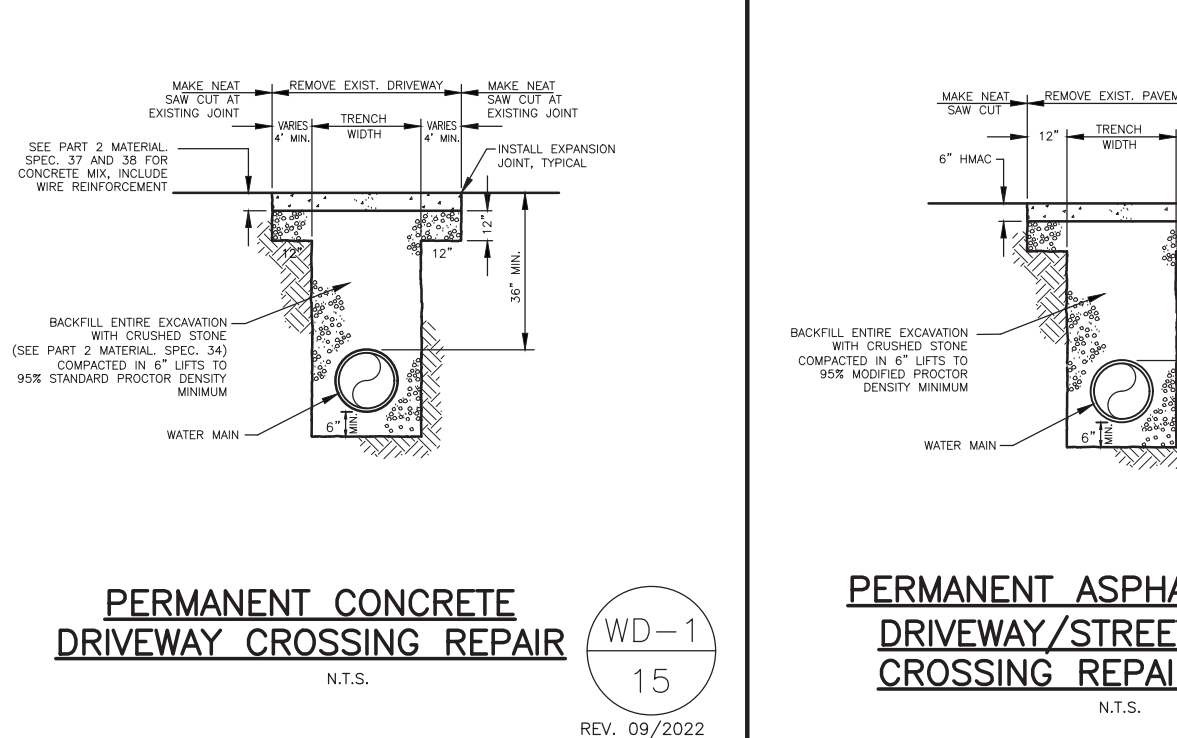
**IN-BUILDING D.I. FIRE SYSTEM RISER LEAD-IN DETAIL**

WD-1  
11A  
REV. 12/2021



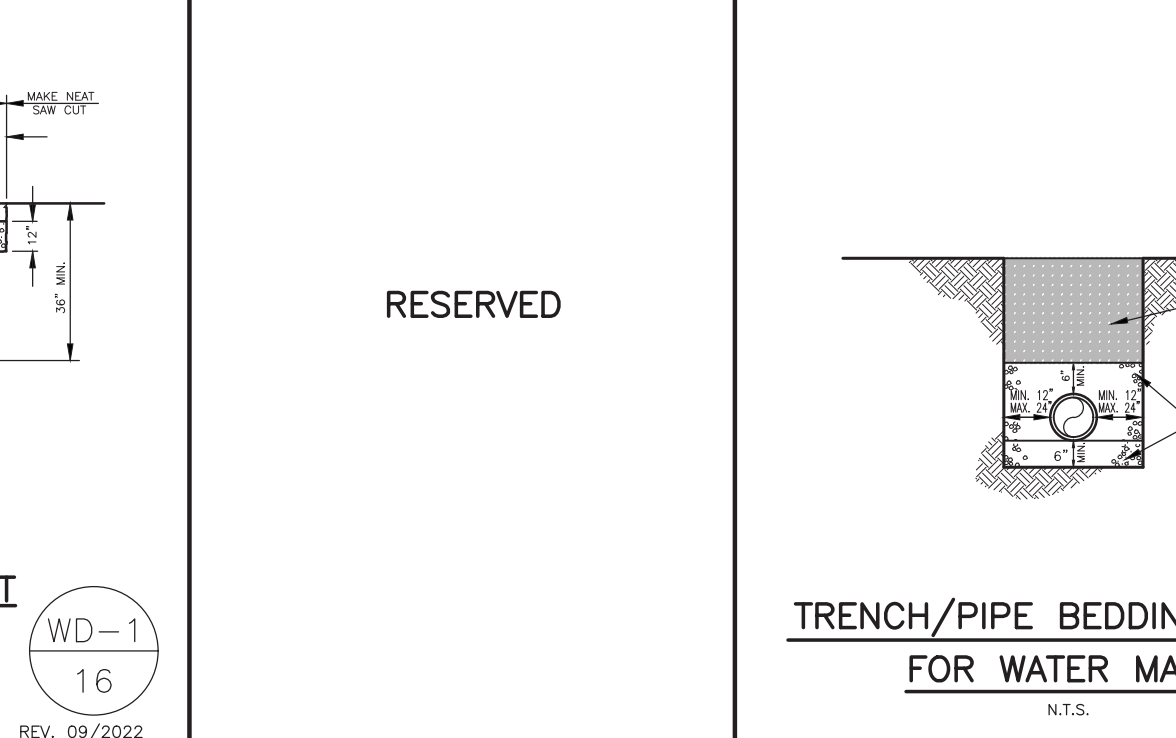
**TYPICAL WATER SERVICE LINE WITH P.V.C. CASING PIPE FOR FAR SIDE SERVICE ON EXISTING STREET**

WD-1  
12  
REV. 04/2021



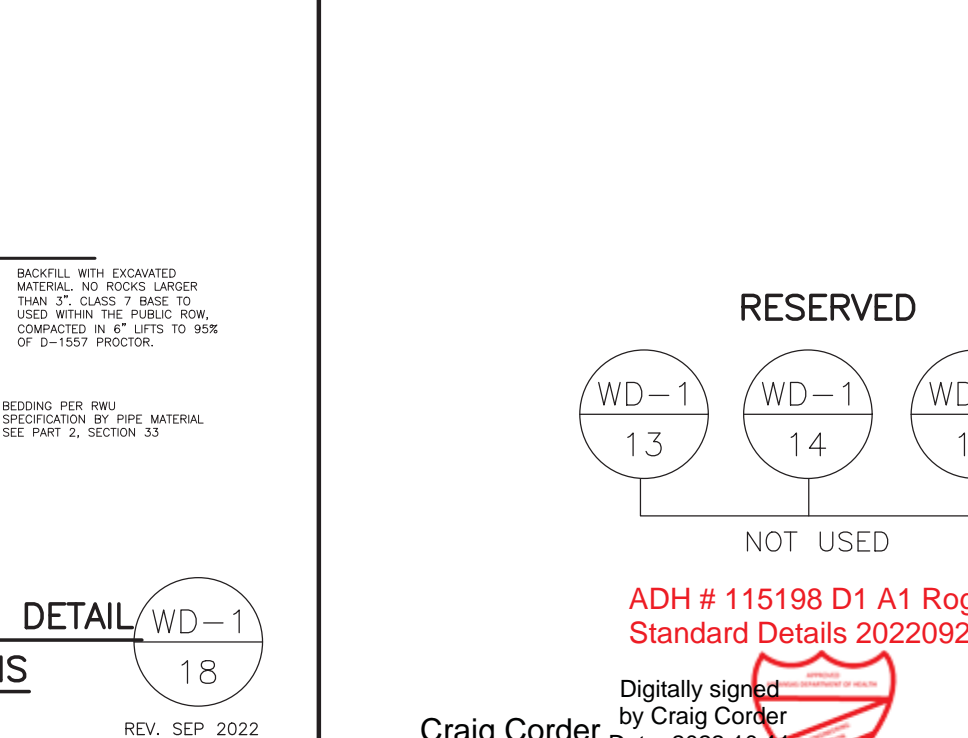
**PERMANENT CONCRETE DRIVEWAY CROSSING REPAIR**

WD-1  
15  
REV. 09/2022



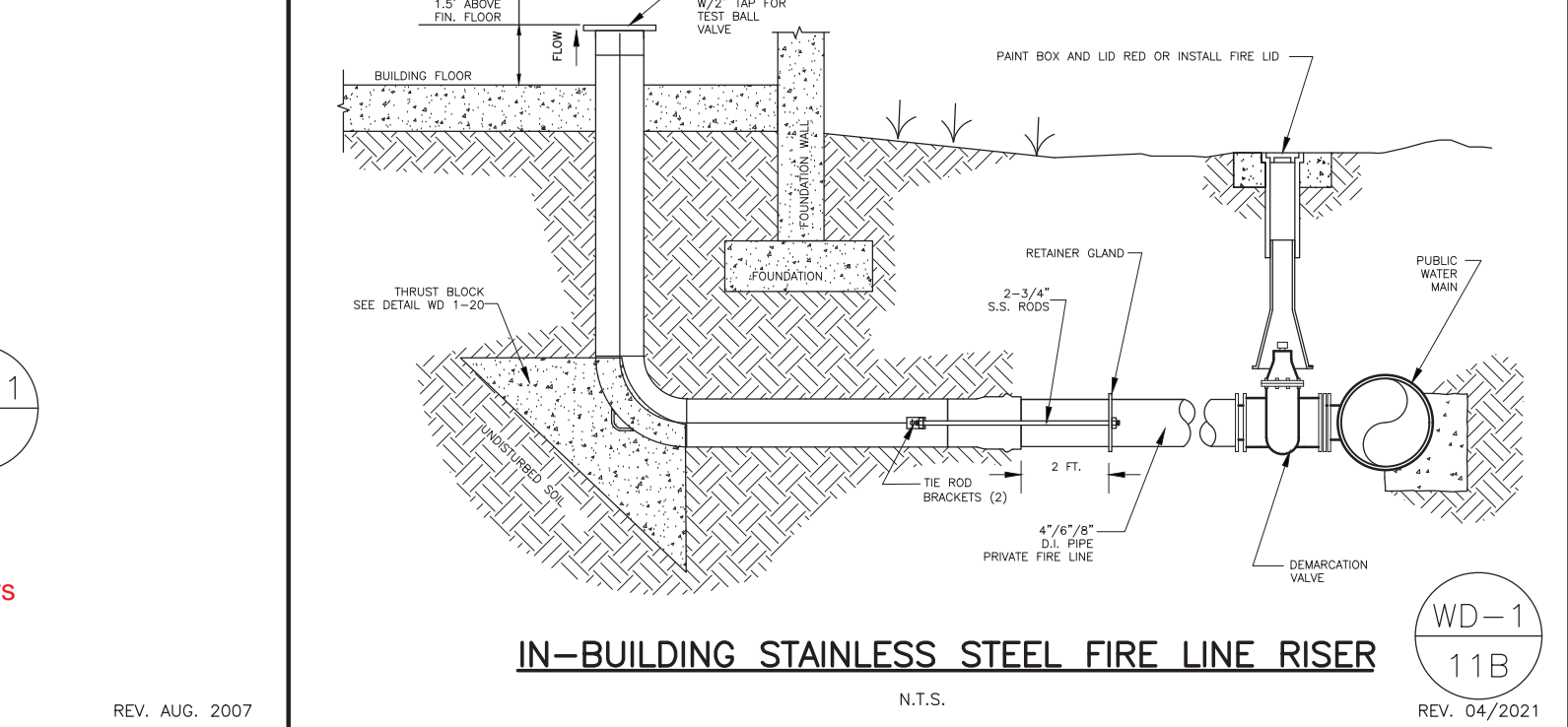
**PERMANENT ASPHALT DRIVEWAY/STREET CROSSING REPAIR**

WD-1  
16  
REV. 09/2022



**TRENCH/PIPE BEDDING DETAIL FOR WATER MAINS**

WD-1  
18  
REV. SEP. 2022

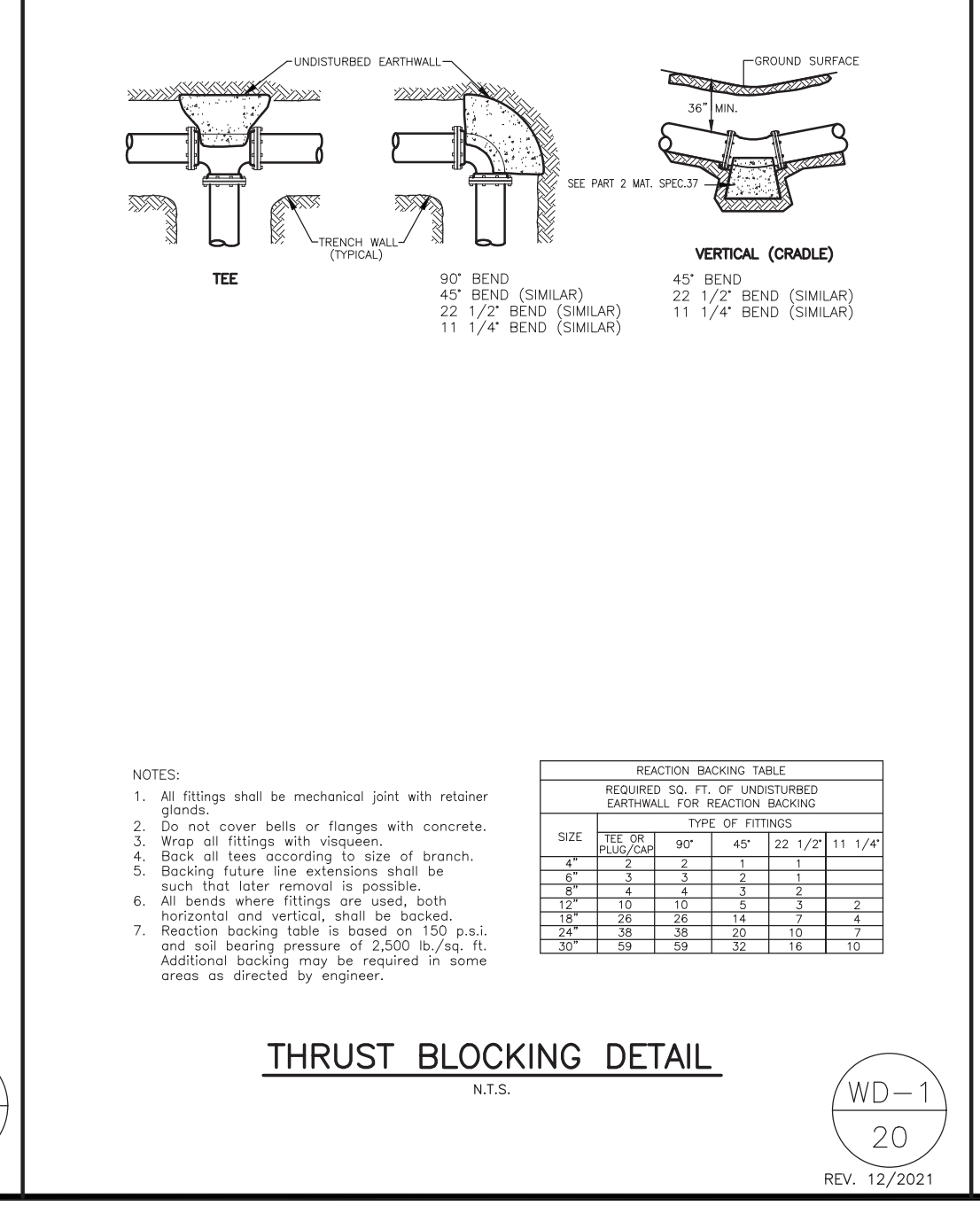


**IN-BUILDING STAINLESS STEEL FIRE LINE RISER**

WD-1  
11B  
REV. 04/2021

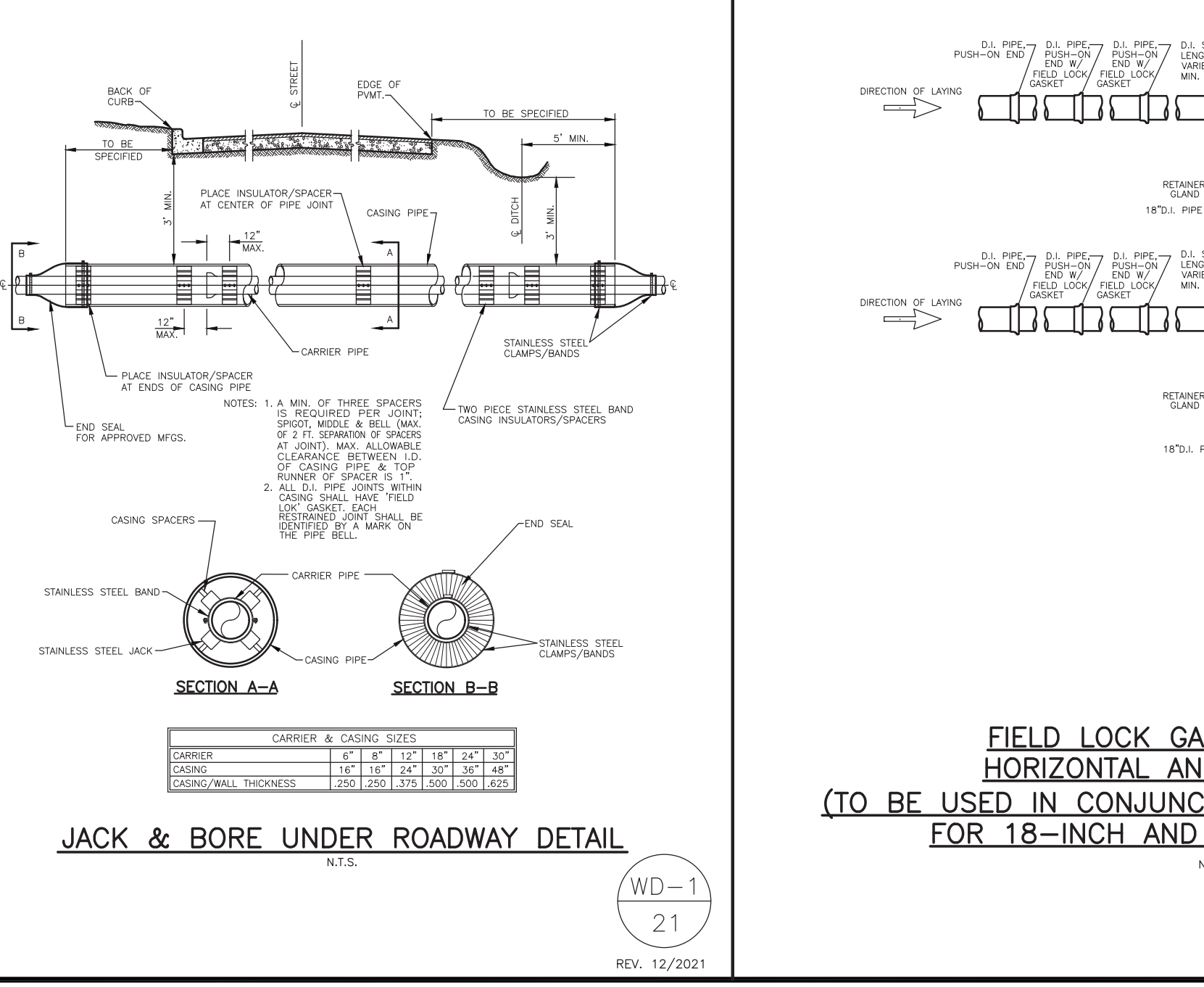
**GENERAL CONSTRUCTION NOTES:**

- The contractor will be held solely responsible for damage occurring to any property during the construction of this project. Said contractor shall take all necessary precautions to prevent property damage.
- In accordance with generally accepted construction practices, the contractor will be solely and completely responsible for conditions of the job site, including safety of all persons and property during performance of the work. This requirement will apply continuously and not be limited to normal working hours.
- The duty of Rogers Water Utilities to conduct construction inspection or review of the contractor's performance is not an inspection or review of the competency of the contractor's safety measures in, on, or near the construction site.
- All water and sewer improvements shall be constructed in accordance with the latest revision to the Rogers Water Utilities Standard Specifications.
- The contractor is specifically cautioned that the location and/or elevation of existing utilities as shown on these plans is based on records of the various utility companies and, where possible, measurements taken in the field. The information is not to be relied on as being exact or complete. The contractor must call the appropriate utility company at least 48 hours before any excavation to request exact field location of utilities. It shall be the responsibility of the contractor to relocate all existing utilities which conflict with the proposed improvements shown on the plans.
- Contractor is to remove and dispose of all debris, rubbish and other materials resulting from previous and current demolition operations. Disposal will be in accordance with all local, state and/or federal regulations governing such operations.
- Prior to installation of any utilities, the contractor is to excavate, verify, and calculate all crossings and inform the Rogers Water Utilities of all crossings prior to construction.
- Construction shall not start on any water utility until approval is given by Rogers Water Utilities. Said contractor shall not operate any valve, hydrant, or water utility appurtenance nor shall he attach to or tap any water utility main without approval. The contractor shall bear the cost and consequence of any disruption of utility operation caused by construction.



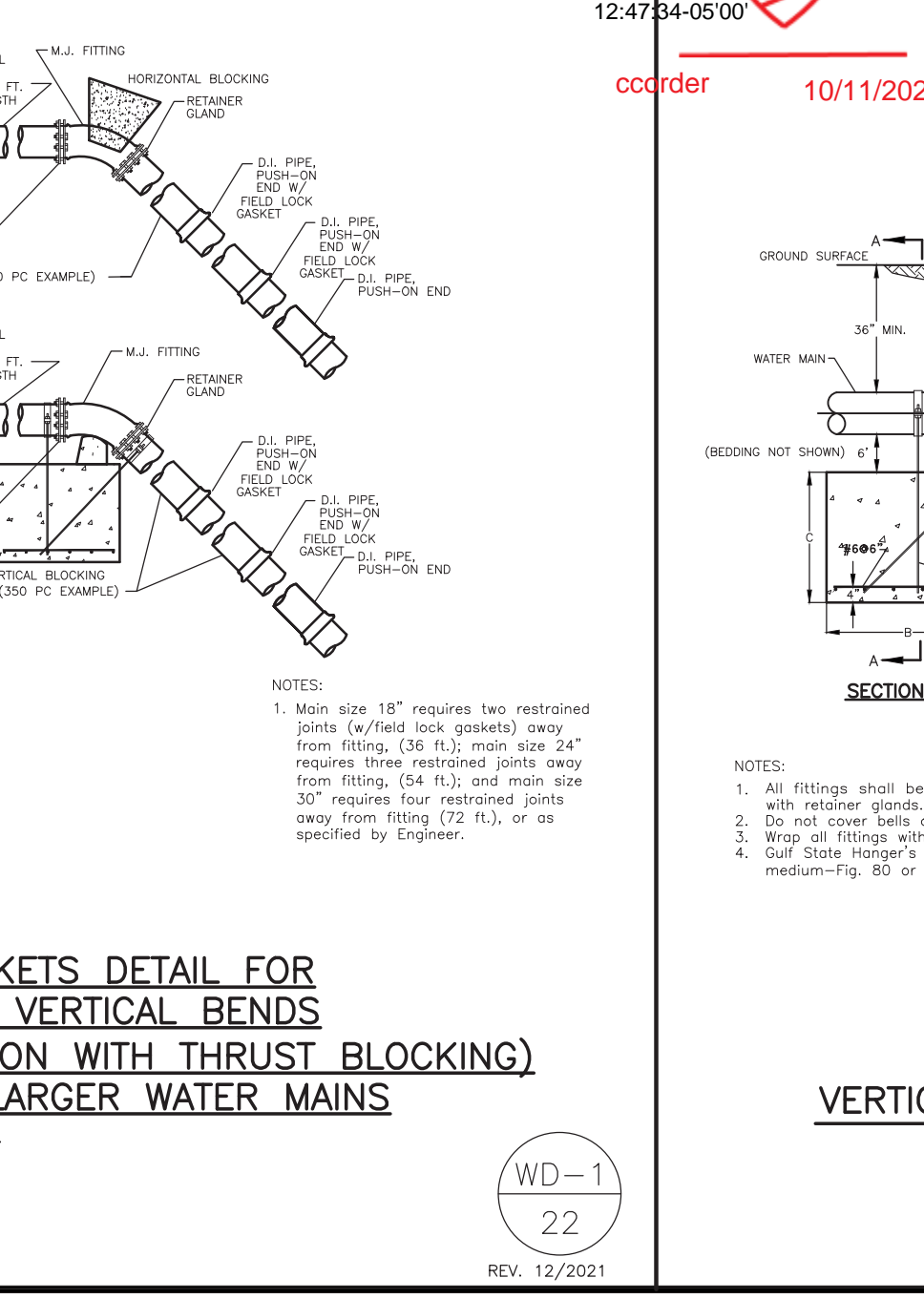
**THRUST BLOCKING DETAIL**

WD-1  
20  
REV. 12/2021



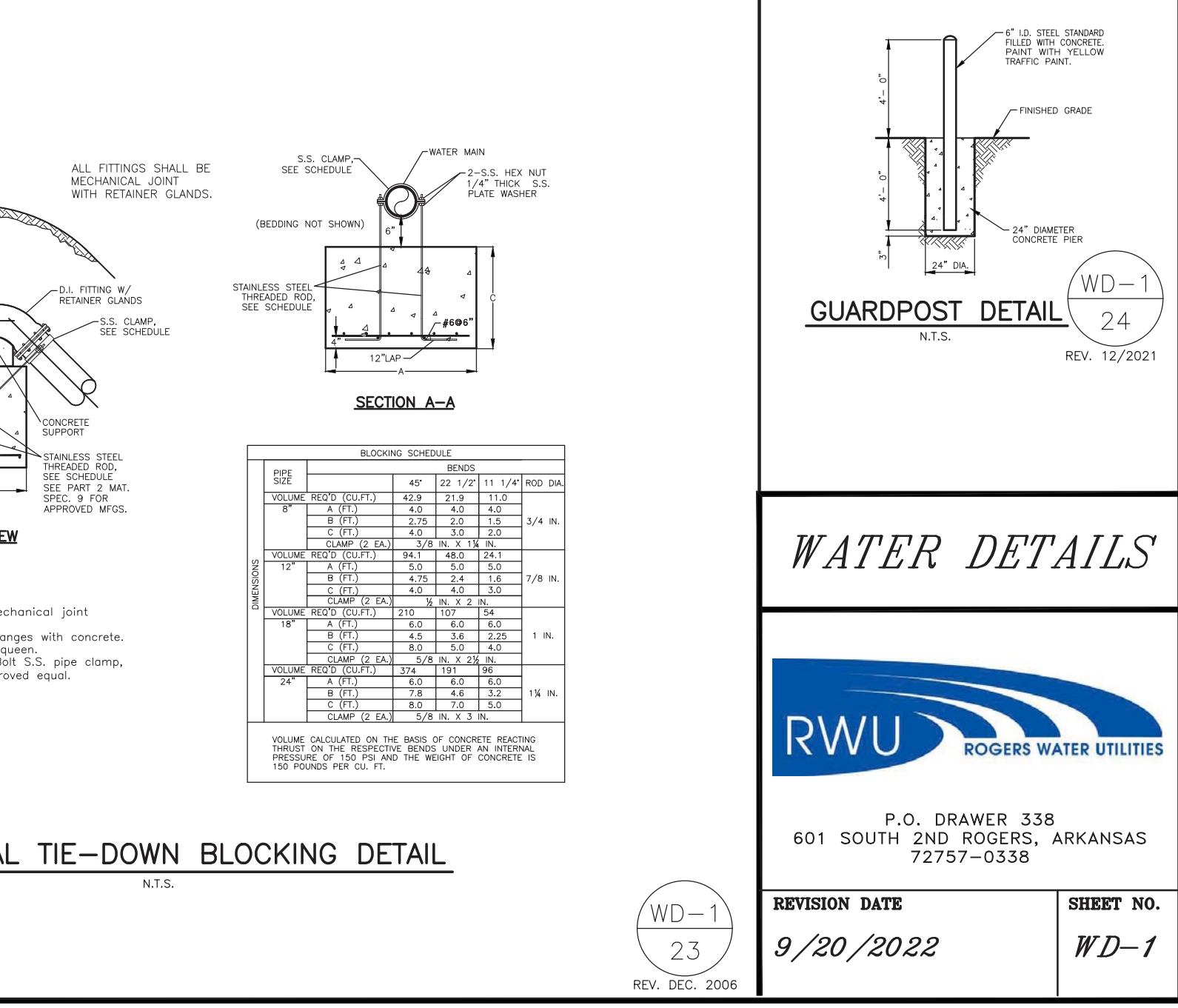
**JACK & BORE UNDER ROADWAY DETAIL**

WD-1  
21  
REV. 12/2021



**FIELD LOCK GASKETS DETAIL FOR HORIZONTAL AND VERTICAL BENDS (TO BE USED IN CONJUNCTION WITH THRUST BLOCKING) FOR 18-INCH AND LARGER WATER MAINS**

WD-1  
22  
REV. 12/2021



**VERTICAL TIE-DOWN BLOCKING DETAIL**

WD-1  
23  
REV. DEC. 2006

**WATER DETAILS**



P.O. DRAWER 338  
601 SOUTH 2ND ROGERS, ARKANSAS  
72757-0338

REVISION DATE: 9/20/2022  
SHEET NO.: WD-1

ADH # 115198 D1 A1 Rogers Standard Details 20220929  
Digitally signed by Craig Cordeiro Date: 2022.10.11 12:47:34-0500